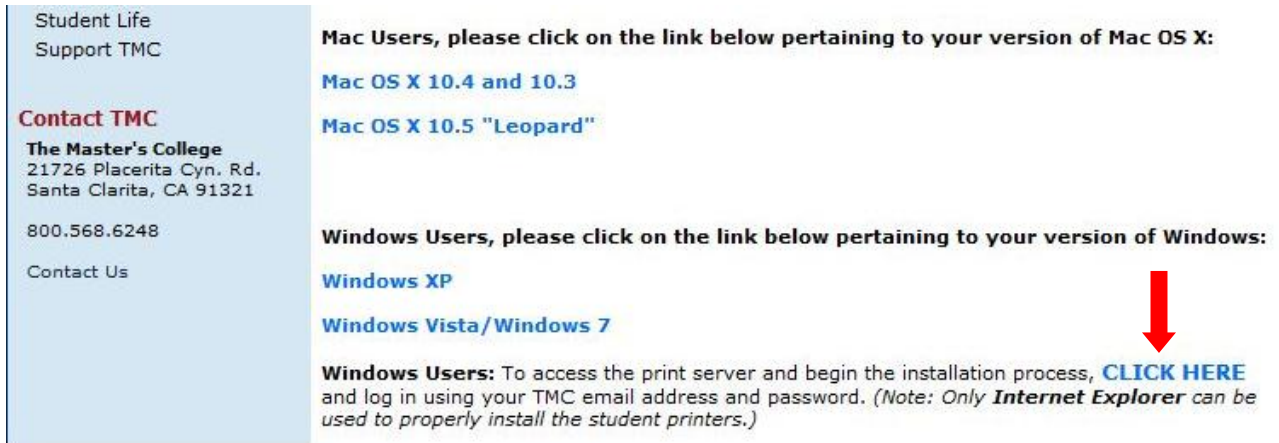


Windows XP Printer Installation Guide

- 1) Open Internet Explorer (**not** Firefox, Netscape, Chrome, or Safari)
- 2) Go to www.masters.edu/printers
- 3) Under the “Windows Users” section, click the “CLICK HERE” link to connect to the print server



The screenshot shows a webpage with a light blue sidebar on the left and a white main content area on the right. The sidebar contains contact information for TMC. The main content area has two sections: one for Mac users and one for Windows users. A red arrow points to the 'CLICK HERE' link in the Windows users section.

Student Life
Support TMC

Contact TMC
The Master's College
21726 Placerita Cyn. Rd.
Santa Clarita, CA 91321

800.568.6248

Contact Us

Mac Users, please click on the link below pertaining to your version of Mac OS X:

[Mac OS X 10.4 and 10.3](#)

[Mac OS X 10.5 "Leopard"](#)

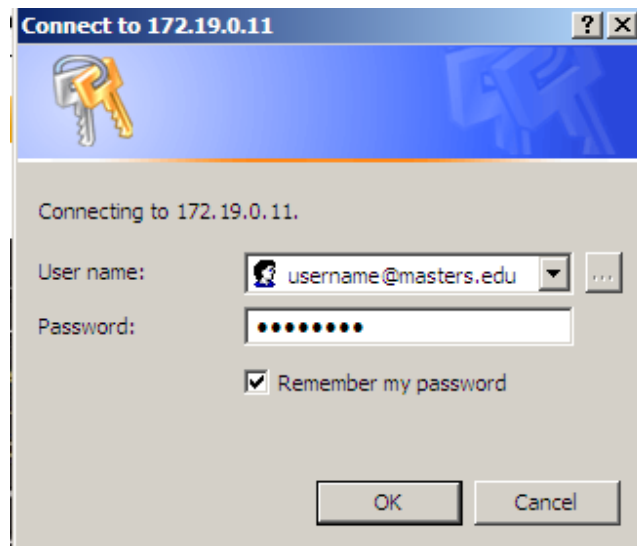
Windows Users, please click on the link below pertaining to your version of Windows:

[Windows XP](#)

[Windows Vista/Windows 7](#)

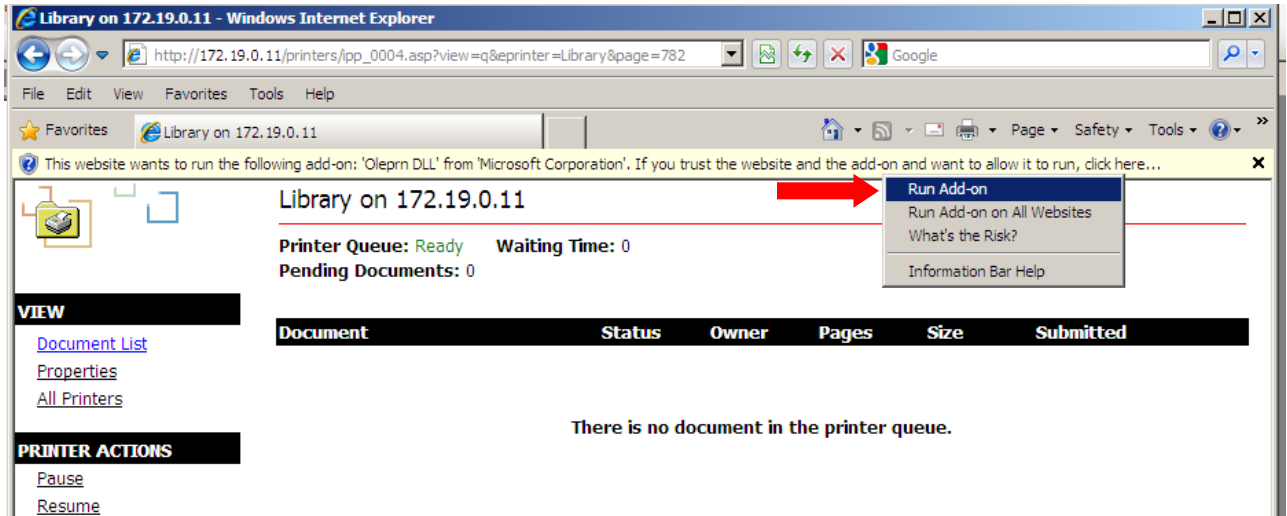
Windows Users: To access the print server and begin the installation process, [CLICK HERE](#) and log in using your TMC email address and password. (Note: Only **Internet Explorer** can be used to properly install the student printers.)

- 4) In the box that pops up, enter your TMC username (including “@masters.edu” NOT “@mail.masters.edu”) and password, and check the “Remember my password” option



- 5) Select the printer you want to install

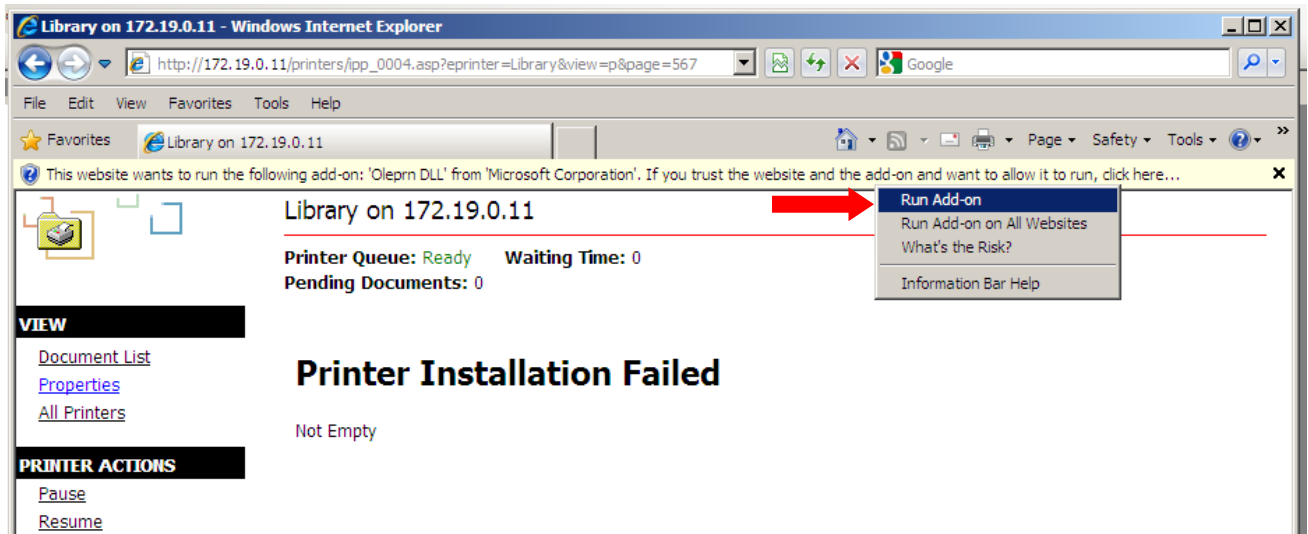
6) Click on the yellow Information Bar that drops down and select “Run Add-on”



7) Click “Run”

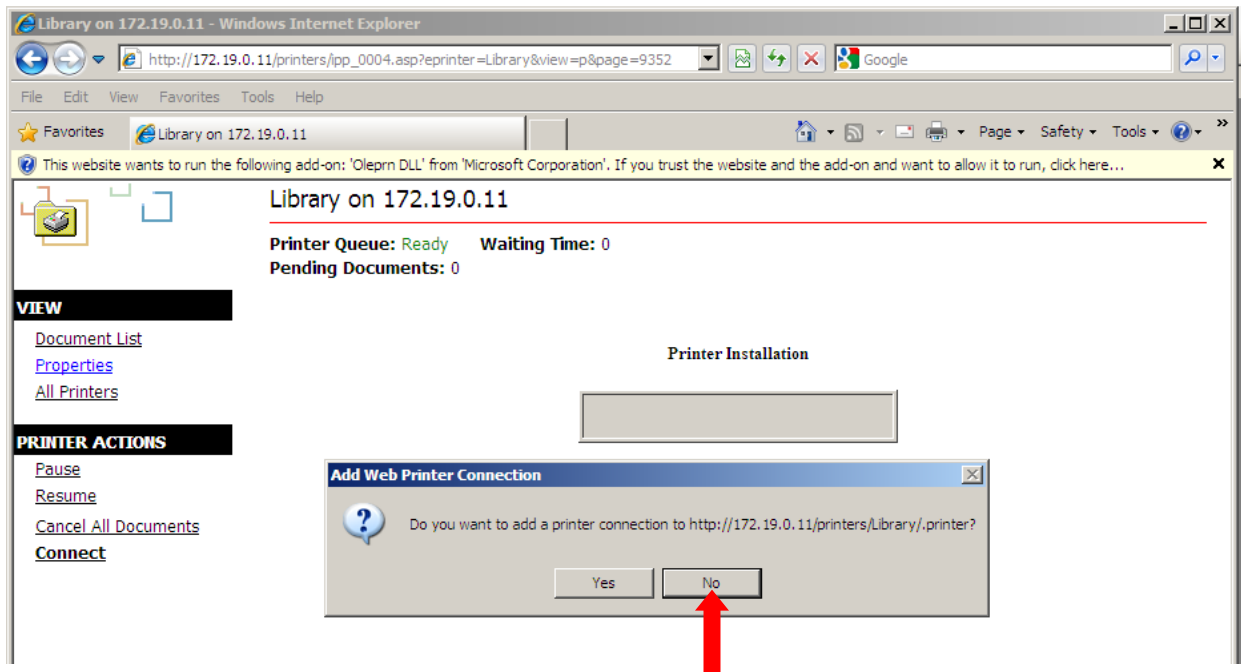
8) On the navigation menu to the left, click “Connect” (if you cannot see the Connect option, you did not correctly install the add-on from Step 6 – close Internet Explorer and start the installation process again)

9) Click on the yellow Information Bar that drops down and select “Run Add-on”

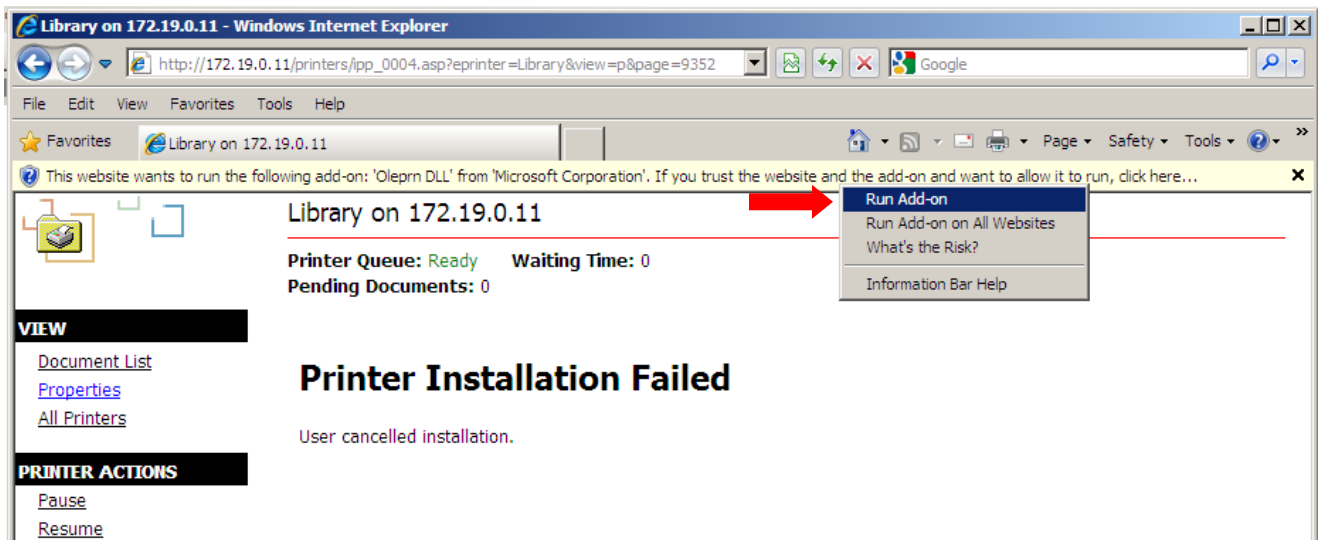


10) Click “Run”

11) On the navigation menu to the left, click “Connect” and then “No” on the box that pops up (there is one more add-on that needs installation)

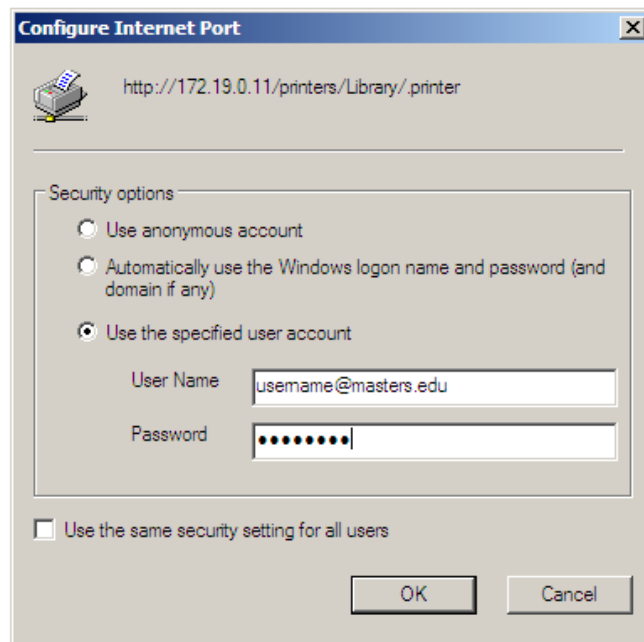


12) Click on the yellow Information Bar that drops down and select “Run Add-on”

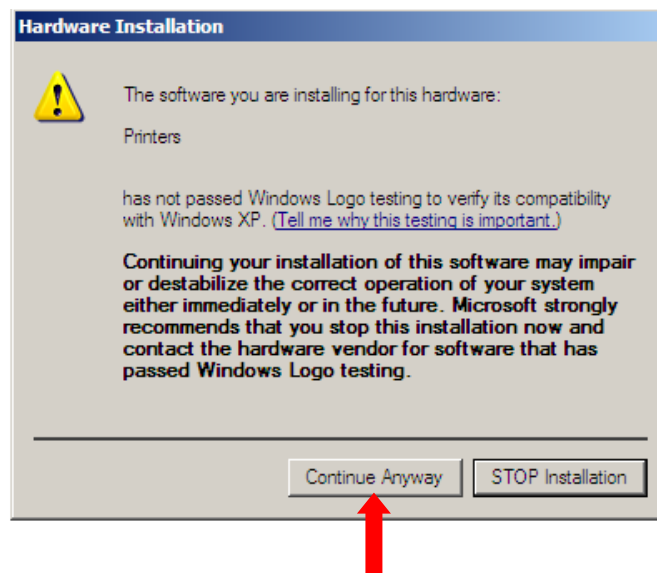


13) Click “Run”

- 14) On the navigation menu to the left, click “Connect” and then “Yes” on the box that pops up
- 15) Select the “Use the specified user account” option on the dialogue box that pops up, and enter your TMC username (including “@masters.edu” NOT “@mail.masters.edu”) and password



- 16) If a box pops up saying that the printer you’re installing is not compatible with Windows XP, click “Continue Anyway”



Your printer is now installed! If you would like to install another printer, repeat these instructions, skipping Steps 6-13. If you have any questions or problems installing the printers, email Computer Services at helpdesk@masters.edu